

INUKA

DECEMBER 2025



2025 ANNUAL REPORT

*Reflecting on our journey,
Building Stronger Community.*

Prepared by

MAEVE TURNER

Founder & CEO

Prepared for

INUKA'S COMMUNITY

ABOUT US

Inuka is a non-profit organisation with a mission to help break the cycle of poverty by building stronger community through education and empowerment projects in Tanzania.

We empower children, schools and communities in Arusha through education, access to long-term opportunity, led by local partnerships and powered by a global community.



LETTER FROM THE FOUNDER

01



Maeve Turner

Founder & CEO

As I reflect on the year that was, it's hard to fully capture just how extraordinary 2025 has been. It was a year of growth and new heights (literally), but also one of grounding, reflection and a deep reaffirmation of why Inuka exists.

One of the most meaningful moments was returning to Tanzania with my family and Brady, who visited for the first time. Watching them experience Inuka's work firsthand and meet the community that shaped our mission was incredibly special. It took me back to my first visit in 2018 and reminded me why I felt so deeply called to support this community. Their hope, faith and determination remain as infectious as ever.



Being back in Arusha was filled with moments I will carry with me forever. Seeing old friends, holding small group discussions about new project ideas and the opening of the sports field at Cheti 5. Now just a short walk from the classrooms, students have access to a safe space to play, connect and thrive. This is a project I am incredibly excited to see grow in the years ahead.

Another proud milestone in Inuka's history was the opening of the tailoring classroom at the Nala Vocational Training Centre, a space where girls previously denied access to education can learn skills, find community and build pathways toward financial independence. In July, I had the honour of attending our first graduation ceremony. Watching 15 young women complete their training, receive their own sewing machines and step confidently into the workforce was nothing short of inspiring.

At the start of the year, we hosted our second major fundraising event, The Inuka Open, which exceeded all expectations and sparked a bold question: why not aim higher?

So we set a goal to raise \$25,000 in 2025 (five times more than we have ever done in a previous year).



Bold, yes. But together, through events, one off donations and regular donors, we achieved it!

The What's Your Climb? challenge saw more than 30 people across Sydney commit to personal challenges, from walking 10,000 steps a day to giving up coffee or running 150 kilometres in 30 days, all in support of the sports field project. Together, our community raised over \$13,000.

Brady and I then took on our own climbs, summiting Mount Meru and Mount Kilimanjaro and by the end of the journey, the campaign had raised \$16,672!

Climbing Kilimanjaro was one of the hardest, but most rewarding experiences of my life. Standing at the summit, knowing I was supported by so many back home and that together we had raised funds to help change lives in Tanzania, was truly surreal. I would not have made it to the top without that support, and for that, I am endlessly grateful.

So, if 2025 taught me anything, it's that even if we are standing at the summit alone, we would have never reached the top without each other.

And as I look to 2026, I'm as inspired and motivated as ever to continue our work and launch new important initiatives.

Thank you for your continued support. Asante sana (*thank you so much*)!

Maeve Turner



Founder & CEO of Inuka

INUKA ON A GLOBAL STAGE

It was a privilege to represent Inuka at two significant forums this year: **The UN @ 80: Shaping Our Future Together** conference in Sydney, hosted by the United Nations Association of Australia and the **Future Action Summit** in Kuala Lumpur, Malaysia.

At the Future Action Summit, I presented to more than 130 delegates from across the globe on the critical role grassroots organisations play in driving long-term, sustainable change. Drawing on Inuka's work in Tanzania, the presentation highlighted how locally led, community-driven approaches often deliver more meaningful and enduring outcomes than traditional top-down development models. These forums provided valuable opportunities to share Inuka's mission, contribute to global conversations on development and connect with other change makers committed to building a more equitable future.



OUR VALUES

Our values are rooted in empowerment, integrity, collaboration, connection and sustainability.

Because every child deserves access to education, safety, clean water and the opportunity to rise.

Because every school deserves the resources to support their students and for teachers to feel empowered.

Because every woman deserves the opportunity to support their family through financial independence.

Because community-driven change is powerful.



WHY INUKA?

Inuka operates on a grassroots, community-led model, meaning projects are designed and implemented alongside local partners and community members.

A defining feature of Inuka is our 100% donation model.

All public donations go directly to programs on the ground. Operational and administrative costs are covered by the Founder and a small group of generous supporters, ensuring donor funds have maximum impact.

MEASURED IMPACT IN 2025

04

Founded in 2019, the first few years of Inuka saw slow and steady growth, and despite challenges, that growth truly accelerated in 2025.

Our partnership with CHETI NGO continues to thrive as we facilitate our projects together in Tanzania. We've made remarkable strides in empowering communities through education and establishing programs and projects that foster collaboration and financial empowerment for women in the local community.



\$25,000+



raised through events, regular donations and one off contributions

1500 + STUDENTS



supported across all of our partner schools

15 GIRLS



graduated from Nala Vocational Training Centre

26 WOMEN



supported through our micro-finance program run in the community

100% DONOR



retention from our regular donors

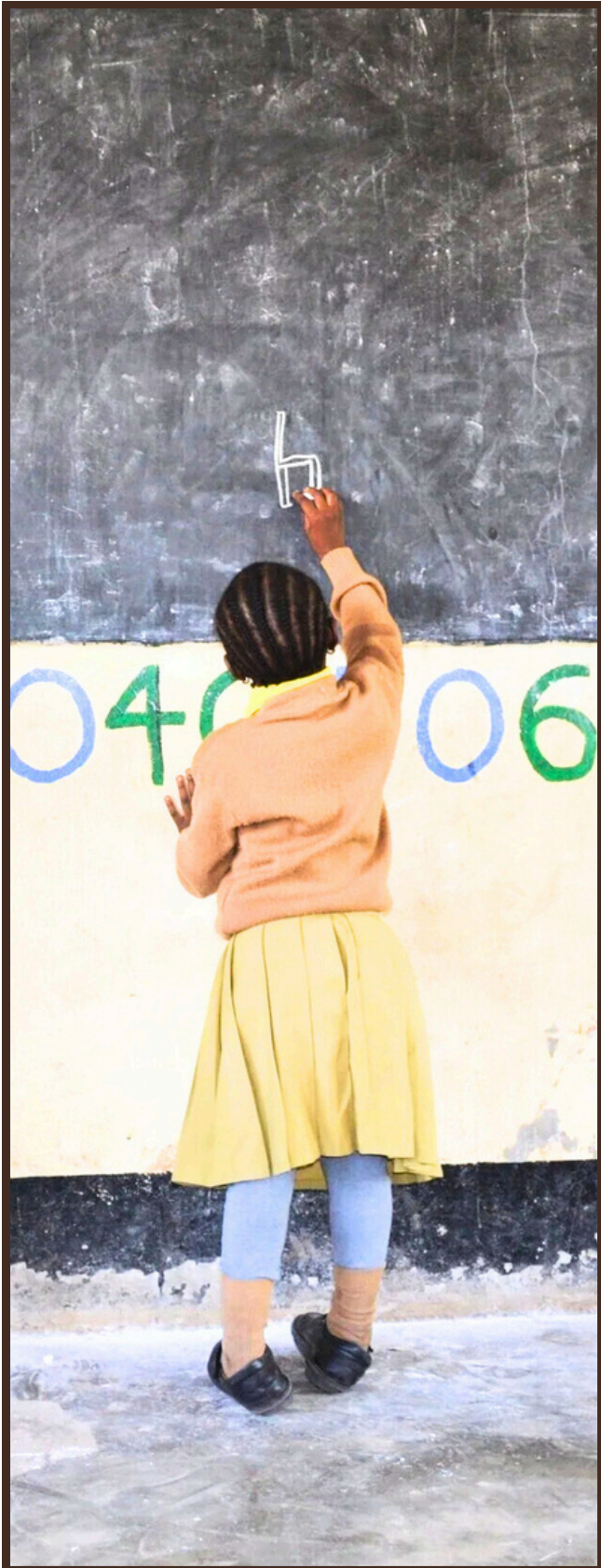
200 PEOPLE



attended our events this year!

EDUCATION & IMPACT

05



Education as the foundation for change

In 2025, our education initiatives continued to strengthen learning environments, expand access to opportunity and create safe, supportive spaces where young people can thrive.

Working in close partnership with CHETI NGO in Arusha, Tanzania, our approach remains deeply community-led. Local teachers, school leaders and community members play an active role in shaping priorities, ensuring that every initiative responds to real needs and delivers sustainable outcomes.

2025 Education impact at a glance

- 1,500+ students supported across Cheti schools
- 700+ students directly benefiting from improved facilities at Cheti 5
- New sports field completed and opened for daily use
- Continued focus on attendance, wellbeing and inclusion

Looking Ahead

Education remains the cornerstone of Inuka's work. In 2026 and beyond, we will continue to build on this foundation, including expanding access to safe water, strengthening student wellbeing initiatives, and deepening partnerships to support post-school education.

EDUCATION & IMPACT

Creating safe and supportive learning environments

A major milestone in 2025 was the opening of the sports field, close to Cheti School No. 5. Sport plays a critical role in student wellbeing, confidence and connection. This project reflects Inuka's commitment to education, recognising that learning outcomes are deeply connected to physical health, mental wellbeing and a sense of belonging. For many students, this marked the first time they had access to a safe, designated space for sport and play.

To celebrate this day, we hosted a football game between the senior students and teachers. It was a tough battle, playing in tough conditions (very hot and the field still needed to be levelled at this stage). Without proper kits both teams put in their best effort, but the teachers came away with the victory. Motivated by the golden trophy, a re-match was scheduled for a few weeks later, and the students won during an overtime shoot-out. Let's see that the 2026 season brings!



Beyond the Classroom: Long-Term Impact

Inuka's education projects are intentionally designed to extend beyond short-term outputs. By investing in infrastructure, wellbeing and community trust, we aim to create conditions where students are supported not only to attend school, but to flourish within it and beyond it.

Our ongoing monitoring focuses on:

- Student attendance and engagement
- Safe access to facilities, *including the Period Poverty project we plan to launch in 2026*
- Community feedback from teachers and families
- Alignment with future initiatives, *including Safe Water in Schools (launching 2026)*

EMPOWERMENT INITIATIVES

07

In 2025, our empowerment programs continued to focus on women and girls who face systemic barriers to education, employment and financial security, ensuring that progress is not only possible, but sustainable.

Delivered in partnership with Cheti NGO, these initiatives are grounded in trust, cultural understanding and local leadership. Each program is shaped by the voices of the girls and women it serves.



Micro-finance Program: Widows in Arusha

In 2025, Inuka supported 26 widows through our micro-finance program. Women receive a small loan to start their own business or bolster an existing one, and beyond financial assistance the program fosters community, shared learning and friendship.

Impact highlights:

- Women reporting increased confidence and health and wellbeing
- Improved ability to pay school fees and provide essentials for their family

Nala Vocational Training Centre: Tailoring

Through the Nala Program, Inuka supported 15 young women in 2025. Many of the girls had previously been denied access to formal education. The program provides skills training in tailoring. Our graduates leave with both technical ability, access to a sewing machine a renewed sense of self-belief and community.

This initiative plays a critical role in breaking cycles of poverty by creating real economic opportunities for young women.

EVENT HIGHLIGHTS

Throughout 2025, Inuka's events brought people together through shared purpose, connection and culture. From The Inuka Open to the What's Your Climb? Challenge, each event played a vital role in strengthening our network, raising essential funds and deepening understanding of the communities and projects we support in Tanzania.

More than fundraising opportunities, these events created spaces for storytelling, learning and collective action, reminding us that meaningful impact is built not only through projects on the ground, but through the relationships and communities that sustain them.



LOCALS COMPETE IN THE INAUGURAL INUKA OPEN

RAISING MONEY FOR
CHILDREN IN AFRICA



Through ticket sales, a raffle and generous support from Lyfstyle Constructions and AMPAC, The Inuka Open raised over \$4000

Maeve and Brady raised over \$10,000 together as part of the What's Your Climb? Challenge



AUSSIE DUO CLIMB AFRICA'S TALLEST PEAKS

TO BUILD SPORTS FIELD FOR
700 STUDENTS IN TANZANIA

OVER 30 PEOPLE ACROSS SYDNEY JOIN THE WYC CHALLENGE

FOR 30 DAYS, THEY SENT A
PERSONAL GOAL TO REACH



35 people from across Sydney helped raise over \$13,000 for the What's Your Climb? Challenge

Our end of year thank you lunch, the Taste of Tanzania, saw our generous community donate an additional \$1000 to end the year



WELCOME TO THE TASTE OF TANZANIA

BRINGING AUTHENTIC CUISINE
FROM ARUSHA TO YOUR PLATE

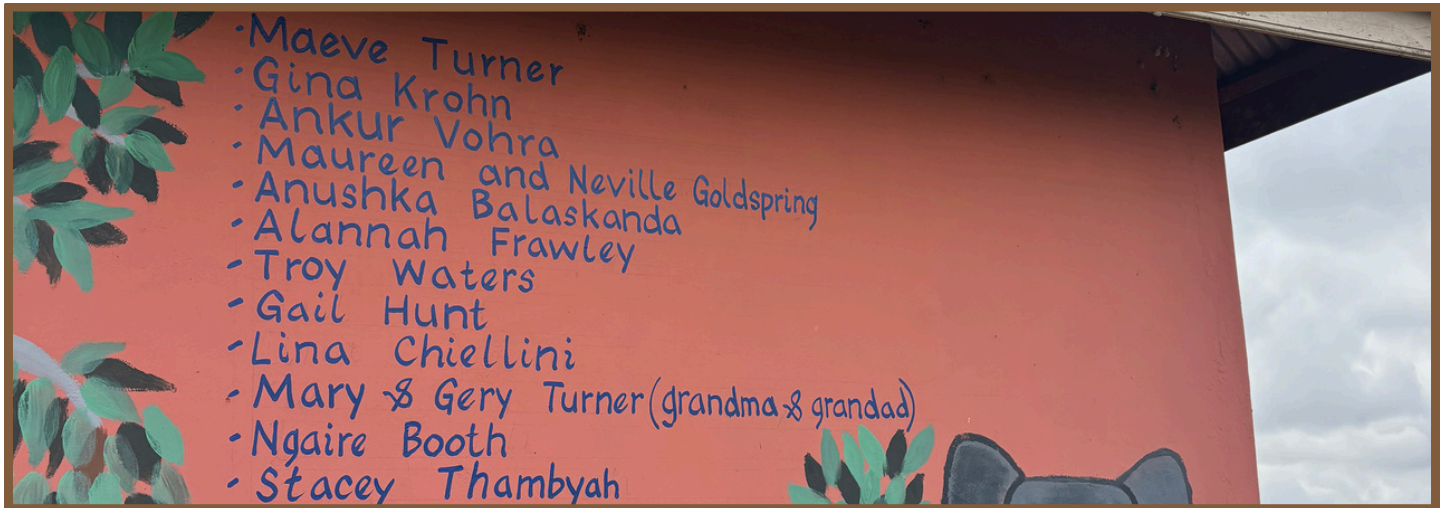
FINANCIAL HIGHLIGHTS

10

In 2025, Inuka raised just over \$25,000 AUD, driven by a combination of community fundraising, events and individual giving. Income sources included:

- Fundraising campaigns: \$16,600 *approx.* (What's Your Climb?)
- Events: \$5,000 *approx.* (The Inuka Open and Taste of Tanzania)
- Regular & one-off donations: \$4,000 *approx.* (including student sponsorship)
- In-kind support: Equipment, venue support, professional services and gifts

This diversified income base reflects growing community trust and engagement, while also highlighting the power of collective, grassroots fundraising.



Where the funds went

- Sports field construction & equipment
- Updated resources for teachers and students
- Sewing machines for Nala graduates
- Micro-finance loans
- Student sponsorship
- Teachers wages at C7 and C8

Every allocation was guided by local priorities identified in partnership with community leaders and Cheti staff.

Looking Ahead

In 2026, Inuka aims to:

- Increase annual fundraising capacity
- Build a small operational buffer to support project continuity
- Diversify income through partnerships and school-to-school programs

Every dollar raised in 2025 helped move us closer to a future where education, empowerment and opportunity are accessible to all.



Each of these initiatives builds on existing partnerships and proven programs, ensuring growth remains intentional and community-led.

Safe Water In Schools

In 2026, Inuka will launch Safe Water in Schools, a multi-phase initiative designed to provide consistent access to clean and safe drinking water across the Cheti school network. What this will include:

- Installation of safe water infrastructure
- Access to clean drinking water for students and staff
- Improved health, attendance and learning outcomes
- Community-led maintenance and sustainability planning

School to School Program

The School-to-School Program will expand in 2026, strengthening global citizenship and shared learning between Australian schools and Cheti schools in Tanzania.

Program highlights:

- Australian schools fundraising to support safe water projects
- Cross-cultural learning and connection
- Students and teachers from Tanzania visiting Australia
- School visits and a community gala event in Sydney

Period Poverty Project

The Period Poverty Project will roll out in phases including:

- Creation of a safe room within schools where girls can rest, change and feel supported
- Refurbishment of school bathroom facilities
- Exploration of locally sourced, sustainable menstrual products

By addressing period poverty, we aim to support girls to stay in school, learn with dignity and participate fully in their education.

OUR FIRST IMMERSIVE EXPERIENCE

12



In 2026, we are proud to launch The Inuka Experience, our first immersive travel program designed to connect people with purpose, where adventure meets impact.

This carefully curated journey invites guests to experience the magic of Tanzania in a meaningful and ethical way. From witnessing the Serengeti on safari to climbing Mount Kilimanjaro, participants will explore the country through authentic cultural experiences, while contributing directly to the projects shaping real futures on the ground.

A portion of every experience fee is reinvested into Inuka's education and empowerment initiatives, ensuring each journey creates lasting community impact beyond the trip itself. Throughout the experience, participants will:

- Explore Tanzania's natural wonders through safari and mountain trekking
- Visit Inuka's projects and meet the communities we support
- Learn about Inuka's grassroots development model and locally led approach
- Take part in cultural exchange, storytelling, and shared moments of connection

The Inuka Experience supports the local tourism industry, prioritises ethical travel and intentionally avoids voluntourism. At its core, the program reflects Inuka's guiding belief - that when we travel with intention and lead with respect, we rise together.

THE TEAM BEHIND THE SCENES

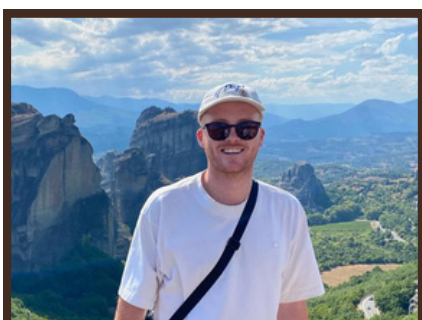
13



Maeve Turner
Founder & CEO of Inuka



Zuma Mtui
Director of CHETI NGO



Brady Tipping
Content & Events



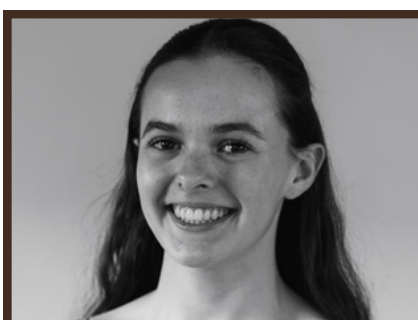
Mathew Iyere
Strategic Partnerships



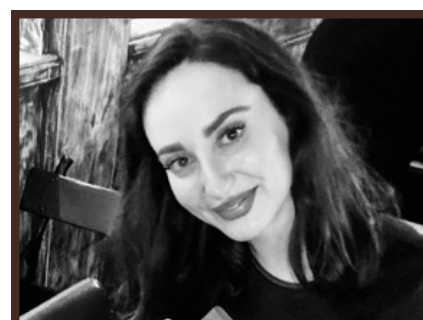
Charlz Calvin
Community Outreach (TZ)



Gina Krohn
Project Officer & Accounts



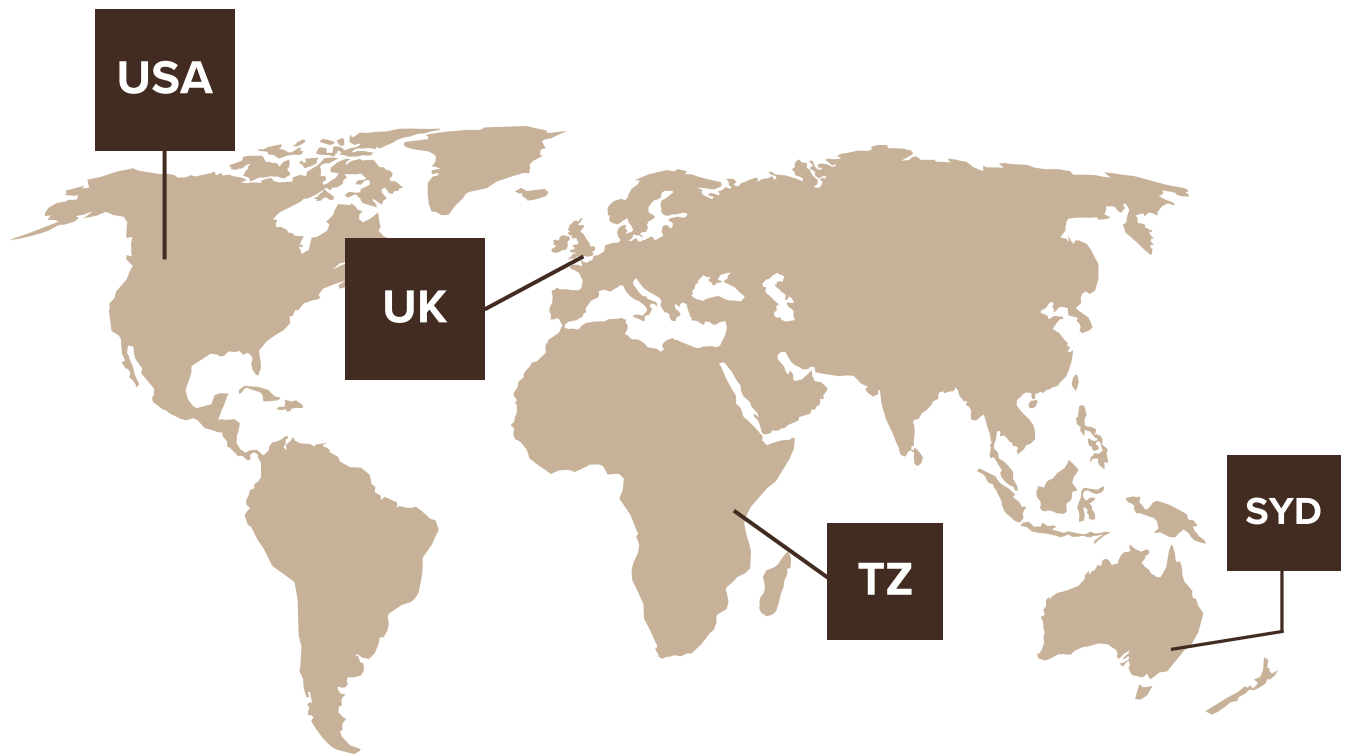
Meg Rodgers
Project Officer



Sarah Chlala
PR & Media Officer

Inuka is a grassroots organisation, which currently receives no government funding.

Our dedicated team of volunteers generously donate their time to ensure operations and project delivery.



A GLOBAL REACH



An idea that started from a connection between an Australian and Africa has now expanded to have a global reach.

We are so grateful for the support we have received from around the world to make Inuka possible.

Through this global network of support, Inuka continues to make a profound and lasting difference in the lives of many. We are deeply grateful for the international collaboration that drives our mission and look forward to further connections we make across the globe.

FUTURE OUTLOOK



As we look ahead, Inuka is poised for another exciting year of growth and impact.

The foundations strengthened throughout 2025 - our trusted community partnerships, proven locally led programs and a growing network of supporters, position us to continue expanding our impact while staying true to our grassroots ethos.

In the years ahead, Inuka will prioritise expanding access to safe water in schools, strengthening education and empowerment pathways for our students and building on initiatives that support girls and women in the community.

Programs like the School-to-School initiative will help to foster global citizenship and shared learning between Australia and Tanzania, while ethical engagement opportunities, like The Inuka Experience, will play a role in sustaining long-term impact as well as connecting our community in Australia to our work in Tanzania.

Supporting local leadership will remain central to our approach, ensuring that change is driven from within the communities we serve.

Thank you for your continued support. None of this would be possible without you.

THANK YOU.

ASANTE SANA

For more information about our programs and how you can get involved, please visit our website at www.inukacommunity.org.